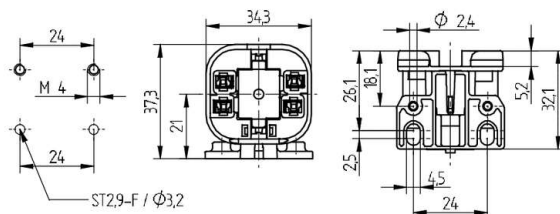


 Create pdf

## Lampholders for compact fluorescent lamps

G24 / GX24

26.745.2351



colour	pkg.	wt.	part no.
white	250	10 g	26.745.2351.50

Key: q-1 (8 / 10 / 13 Watt) / q-5 (57 Watt)\*\*

Approval: additional cULus

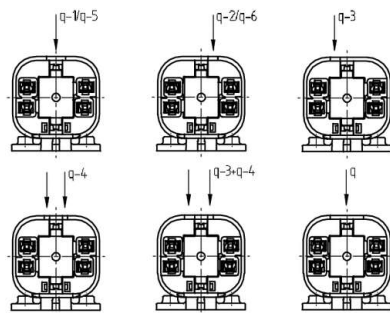
For lamps TC-DEL, TC-TEL




Screw fixing horizontally

Housing: PBT

\*\*Key q-5 only when used with adaptor  
26.725.-420

- Long holes  $\varnothing$  4.5 x 2.5 mm for screws ISO 1207 - M4
- Holes  $\varnothing$  2.4 mm for self-tapping screws ISO 1481 - ST2.9 - F
- Please note the base diameter (max.  $\varnothing$  61 mm) for lamps with base GX 24.
- If required screw fixing foot 26.745.-440. 50 and lampholders can be supplied separately



T 140		 0.5 - 1.0 mm <sup>2</sup>	 18 AWG 0.5 - 1.0 mm <sup>2</sup>
-------	---	--	--

Document generated on: Th, 9. February 2017 - 11:50